



Neuroglycan C Polyclonal Antibody

Catalog No	YP-Ab-12759
Isotype	IgG
Reactivity	Human;Mouse;Rat
Applications	WB;IHC
Gene Name	CSPG5
Protein Name	Chondroitin sulfate proteoglycan 5
Immunogen	The antiserum was produced against synthesized peptide derived from human CSPG5. AA range:211-260
Specificity	Neuroglycan C Polyclonal Antibody detects endogenous levels of Neuroglycan C protein.
Formulation	Liquid in PBS containing 50% glycerol, 0.5% BSA and 0.02% sodium azide.
Source	Polyclonal, Rabbit,IgG
Purification	The antibody was affinity-purified from rabbit antiserum by affinity-chromatography using epitope-specific immunogen.
Dilution	WB 1:500-2000;IHC-p 1:50-300
Concentration	1 mg/ml
Purity	≥90%
Storage Stability	-20°C/1 year
Synonyms	CSPG5; CALEB; NGC; Chondroitin sulfate proteoglycan 5; Acidic leucine-rich EGF-like domain-containing brain protein; Neuroglycan C
Observed Band	60kD
Cell Pathway	Cell membrane ; Single-pass type I membrane protein . Cell junction, synapse, synaptic cell membrane ; Single-pass type I membrane protein . Endoplasmic reticulum membrane ; Single-pass type I membrane protein . Golgi apparatus membrane ; Single-pass type I membrane protein . Cell surface . In neurons, localizes to synaptic junctions. Also detected in the endoplasmic reticulum and the Golgi. Partially enriched in lipid rafts. .
Tissue Specificity	Restricted to brain (at protein level).
Function	developmental stage:Expressed in brain of 3 months, 5 and 10-year-old individuals.,function:May function as a growth and differentiation factor involved in neuritogenesis. May induce ERBB3 activation.,miscellaneous:Different forms of various molecular weight have been observed. Such forms are possibly due to different levels of glycosylation, phosphorylation and/or protein cleavage.,PTM:N-glycosylated.,PTM:O-glycosylated; contains chondroitin sulfate glycans. Part-time proteoglycan, expressed in part as a proteoglycan exhibiting chondroitin sulfate glycans and in part as a non-proteoglycan form. The relative amount of both forms depends on tissues and tissues maturation.,PTM:Phosphorylated; in intracellular and extracellular



parts.,similarity:Contains 1 EGF-like domain.,subcellular location:In neurons, localizes to synaptic junctions (By similarity). Also detected in the endoplasmic reti

Background

The protein encoded by this gene is a proteoglycan that may function as a neural growth and differentiation factor. Several transcript variants encoding different isoforms have been found for this gene. [provided by RefSeq, May 2011],

matters needing attention

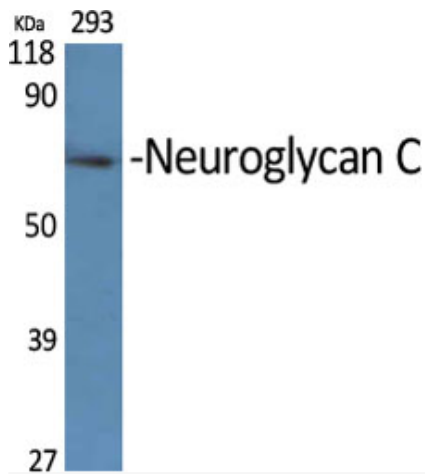
Avoid repeated freezing and thawing!

Usage suggestions

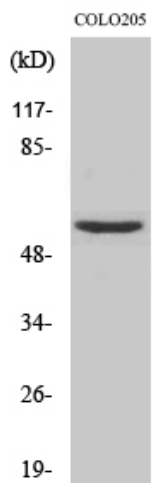
This product can be used in immunological reaction related experiments. For more information, please consult technical personnel.



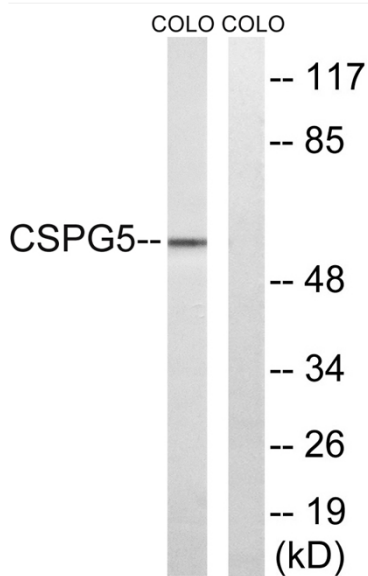
Products Images



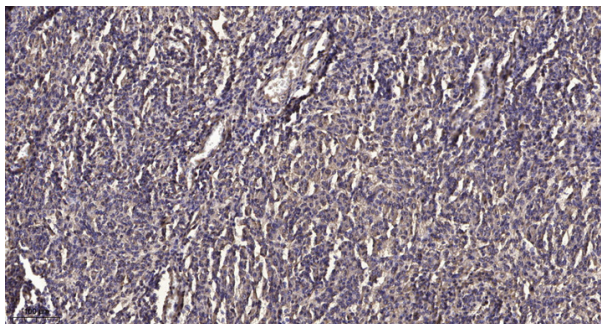
Western Blot analysis of various cells using Neuroglycan C Polyclonal Antibody



Western Blot analysis of HeLa cells using Neuroglycan C Polyclonal Antibody



Western blot analysis of lysates from COLO and HeLa cells, using CSPG5 Antibody. The lane on the right is blocked with the synthesized peptide.



Immunohistochemical analysis of paraffin-embedded human meningioma. 1, Antibody was diluted at 1:200(4 ° overnight). 2, Tris-EDTA,pH9.0 was used for antigen retrieval. 3,Secondary antibody was diluted at 1:200(room temperature, 45min).